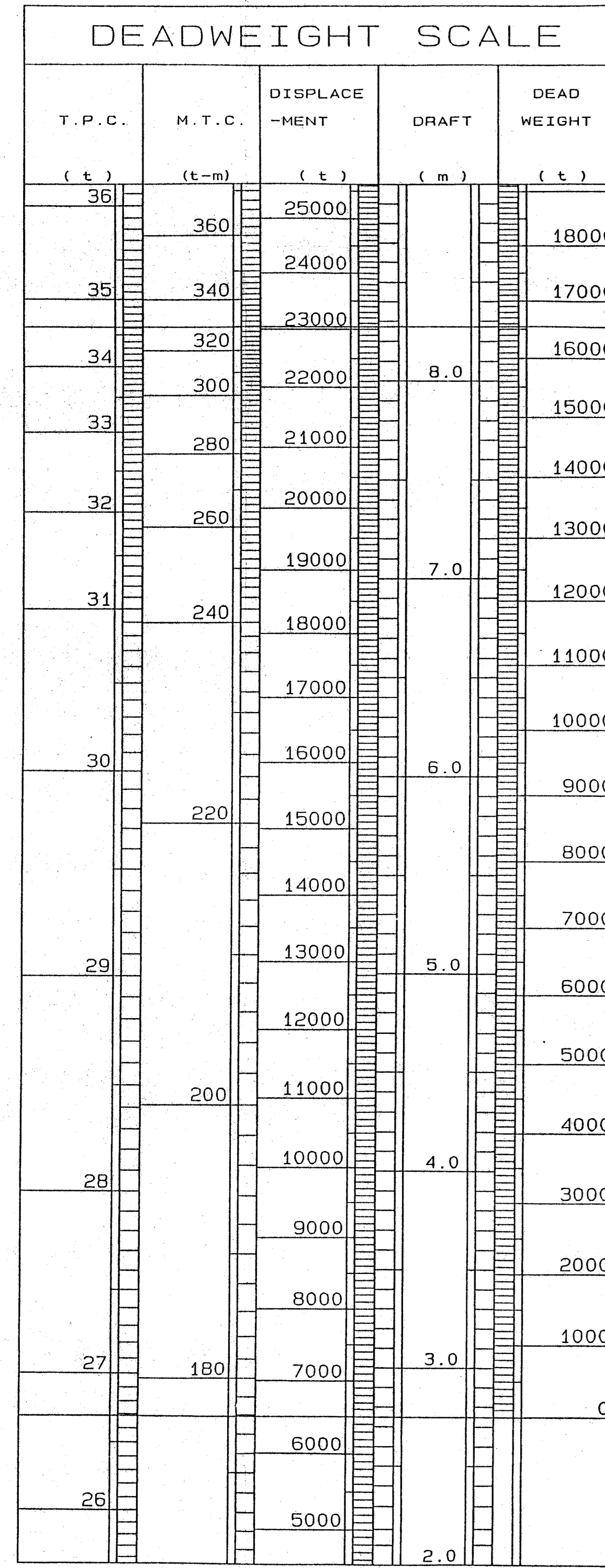


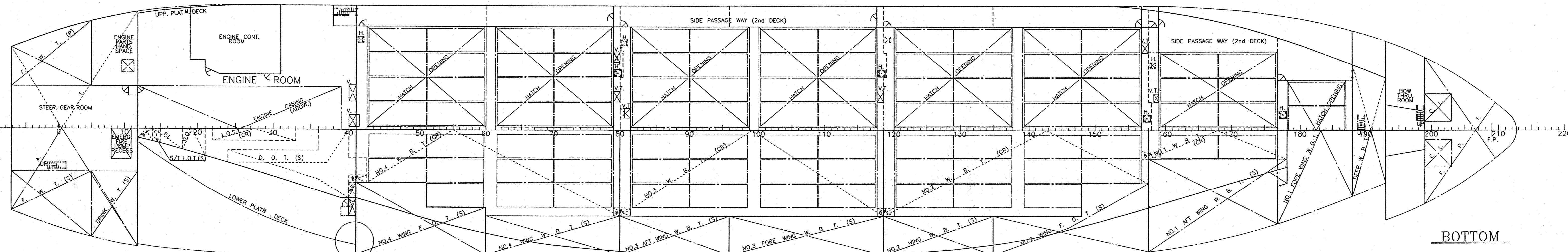
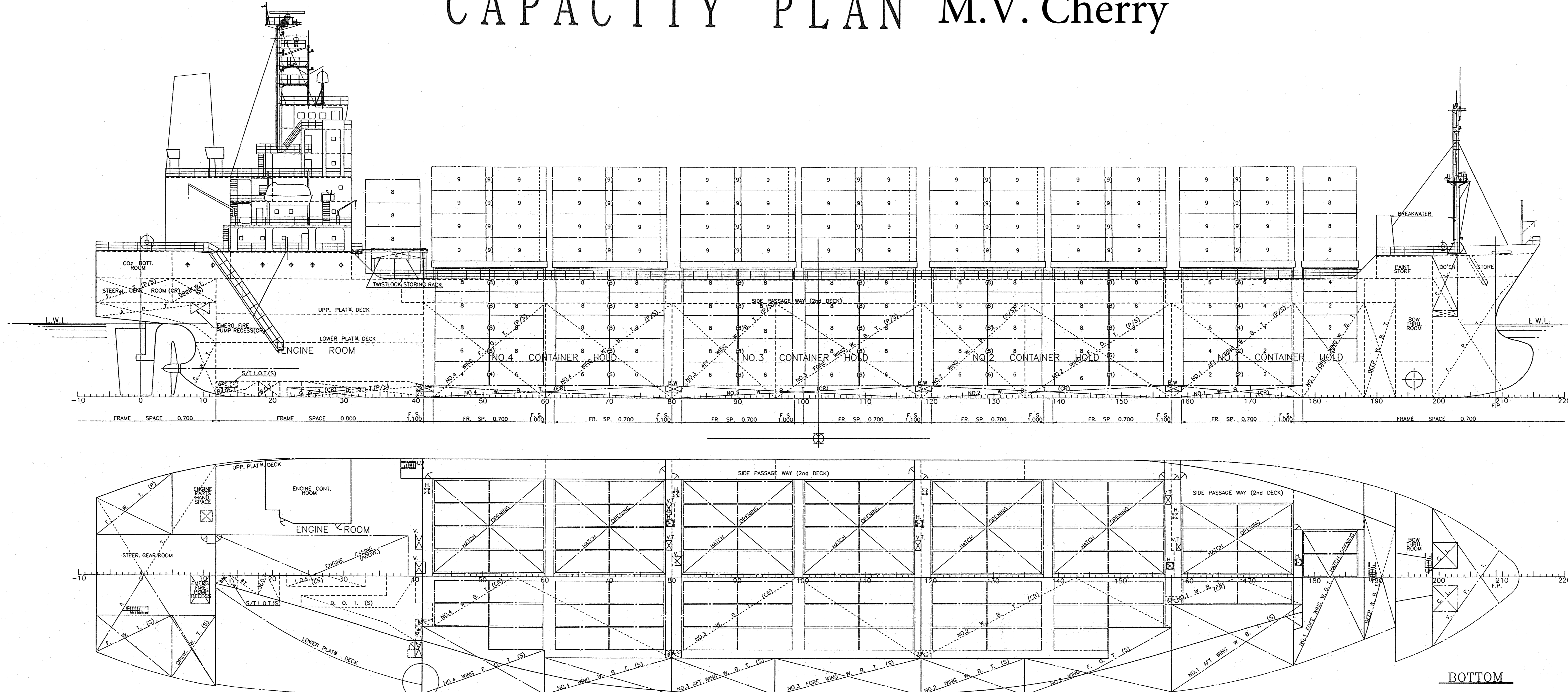
CAPACITY PLAN M.V. Cherry

DATE	REV. NO.	DESCRIPTIONS	SIGN.
		DRAWN UP	



FULL DRAFT : 8.272 m
 FULL DISPLACEMENT : 23,043 t
 DEADWEIGHT : 16,544 t

LIGHT WEIGHT : 0.499 t
 DRAFT : 2.75 m



Container stowage number (20 feet mode)

Hatch No.	By Deck	8	7	6	5	4	3	2	1	Total	
Hatch No.	Front	4	4	4	4	4	4	4	4	40	
Bay No.		31	29	27	25	23	21	19	17	15	
On Deck		4th Tier (80)	8	9	9	9	9	9	9	9	142
		3rd Tier (80)	8	9	9	9	9	9	9	9	142
		2nd Tier (80)	8	9	9	9	9	9	9	9	142
		1st Tier (80)	4	9	9	9	9	9	9	9	138
In Hold		28	36	36	36	36	36	36	36	36	564
Grand Total		28	292	296	292	288	284	280	276	1064	

CAPACITY OF OTHER TANKS

COMPARTMENT	LOCATION (FRAME No.)	CAPACITY (cu m)	WEIGHT (MT)	CENTER OF GRAVITY (CG) (m)	MAX. FREE SURFACE (cu m)
LUB. OIL SUMP TANK	C 23 - 33	28.78	226.17	22.17	0.50
S/T LUB. OIL SUMP T.	S 14 - 15	0.57	4.56	0.58	1.50
WASTE OIL TANK	C 18 - 21	15.18	121.44	11.54	1.07
WILDER TANK	C 12 - 18	13.92	111.36	10.92	1.06
COOLING W.T.	C A.E - 12	15.72	125.76	15.72	3.38
TOTAL		65.22	523.30		47.4

CAPACITY OF WATER BALLAST TANKS

COMPARTMENT	LOCATION (FRAME No.)	CAPACITY (1000cu ft)	WEIGHT (1000cu ft)	CENTER OF GRAVITY (CG) (m)	MAX. FREE SURFACE (cu m)
FORE PEAK TANK	C 199 - 198	214.60	1716.80	171.68	7.33
DEEP W.B.T.	C 188 - 183	247.47	1979.76	197.98	8.22
NO. 1 WING W.B.T.	C 177 - 188	536.88	4295.04	429.50	18.89
NO. 1 A WING W.B.T.	P 158 - 178	511.71	4093.68	409.37	17.87
NO. 1 WING W.B.T.	S 158 - 178	511.71	4093.68	409.37	17.87
NO. 2 WING W.B.T.	P 119 - 135	296.13	2369.04	236.13	9.85
NO. 2 WING W.B.T.	S 119 - 135	296.13	2369.04	236.13	9.85
NO. 3 WING W.B.T.	P 80 - 96	307.34	2458.72	245.87	9.83
NO. 3 WING W.B.T.	S 80 - 96	307.34	2458.72	245.87	9.83
NO. 4 WING W.B.T.	P 60 - 80	339.49	2715.92	271.59	10.87
NO. 4 WING W.B.T.	S 60 - 80	339.49	2715.92	271.59	10.87
NO. 1 WATER BALLAST TANK	C 158 - 178	116.69	933.52	93.35	3.71
NO. 2 WATER BALLAST TANK	C 119 - 138	600.73	4805.84	480.58	19.22
NO. 3 WATER BALLAST TANK	C 80 - 119	654.85	5238.80	523.88	20.95
NO. 4 WATER BALLAST TANK	C 40 - 80	593.50	4748.00	474.80	18.99
AFT PEAK TANK	C A.E - 12	703.46	5627.68	562.77	22.51
TOTAL		7,582.06	60,656.00		24.88

- NOTES**
- SPECIFIC GRAVITY: SEA WATER 1.025, FRESH WATER 1.000, FUEL OIL 0.925, DIESEL OIL 0.880, LUBRICATING OIL 0.900.
 - LOADING RATE FOR OIL: FUEL OIL 96%, DIESEL OIL 96%, LUBRICATING OIL 96%.
 - DISTANCE: AFT FROM MIDSHIP (C), FORWARD FROM MIDSHIP (C).

CAPACITY OF FRESH WATER TANKS

COMPARTMENT	LOCATION (FRAME No.)	CAPACITY (1000cu ft)	WEIGHT (1000cu ft)	CENTER OF GRAVITY (CG) (m)	MAX. FREE SURFACE (cu m)
FRESH WATER TANK	P A.E - 5	126.95	1015.60	101.56	4.06
FRESH WATER TANK	S A.E - 5	126.95	1015.60	101.56	4.06
DRINK. WATER TANK	S 6 - 12	96.60	772.80	77.28	3.01
TOTAL		350.50	2804.00		11.13

CAPACITY OF FUEL OIL TANKS

COMPARTMENT	LOCATION (FRAME No.)	CAPACITY (985cu ft)	WEIGHT (985cu ft)	CENTER OF GRAVITY (CG) (m)	MAX. FREE SURFACE (cu m)
NO. 2 WING F.O.T.	P 135 - 158	402.56	3180.48	318.05	12.72
NO. 2 WING F.O.T.	S 135 - 158	402.56	3180.48	318.05	12.72
NO. 4 WING F.O.T.	P 41 - 60	364.47	2915.76	291.58	11.26
NO. 4 WING F.O.T.	S 41 - 60	364.47	2915.76	291.58	11.26
DIESEL OIL T.	S 24 - 42	62.06	496.48	49.65	1.87
DIESEL OIL T.	S 24 - 42	62.06	496.48	49.65	1.87
TOTAL		1,600.52	12,765.44		48.44

PRINCIPAL PARTICULARS

LENGTH OVERALL	161.96 m
LENGTH B.P.	152.00 m
BREADTH M.D.	26.20 m
DEPTH M.D.	13.20 m
DESIGNED LOAD DRAFT M.D.	9.200 m
DEADWEIGHT	16,544 M.T.
GROSS TONNAGE	14,857
SPEED (at sea)	19.0 KTS
MAIN ENGINE	HITACHI ZOSEN - MAN B&W ESSING * 11ST
M.C.O.	16,680HP * 105RPM
CLASS	NK

FREEBOARD PARTICULARS

ITEM	FREEBOARD (m)	DRAFT (m)	DISPLACEMENT (MT)	DEADWEIGHT (MT)
TF TROPICAL FRESH WATER	2.032	8.610	23,643	17,144
F FRESH WATER	2.194	8.438	23,049	16,550
T TROPICAL	2.188	8.444	23,046	17,147
S SUMMER	2.360	8.272	23,043	16,544
W WINTER	2.532	8.100	22,448	15,949

Container stowage number (40 & 20 feet mode)

Hatch No.	By Deck	8	7	6	5	4	3	2	1	Total	
Hatch No.	Front	4	4	4	4	4	4	4	4	40	
Bay No.		31	28	24	20	16	12	08	04	01	
On Deck		4th Tier (80)	8	9	9	9	9	9	9	9	142
		3rd Tier (80)	8	9	9	9	9	9	9	9	142
		2nd Tier (80)	8	9	9	9	9	9	9	9	142
		1st Tier (80)	4	9	9	9	9	9	9	9	138
In Hold		34	38	38	36	36	36	36	36	36	564
Grand Total		34	322	326	322	314	310	306	302	1264	

TEU () : TEU
 REEFER CONTAINER : 120 FEU + 30 TEU (ALL 440V, AIR COOLED TYPE)

FINISHED PLAN

S.No. **636** DOWN YAMAMOTO MARITIME S.A.

NAME **CHERRY** TYPE 1,000 T.E.U. CONTAINER CARRIER

PLAN WITH DEADWEIGHT SCALE

SCALE

NAIGAI ZOSEN
 SHIP DESIGN DEPARTMENT
 HULL DESIGN SECTION
 SHIBUYA, TOKYO, JAPAN

DATE **SEP. 27, 1978** CODE NO. C-63

DWG NO. 63