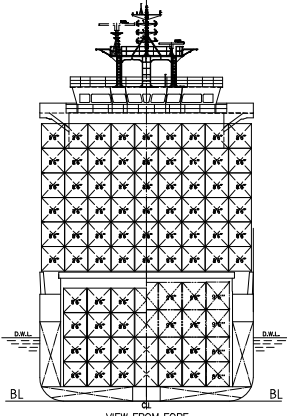
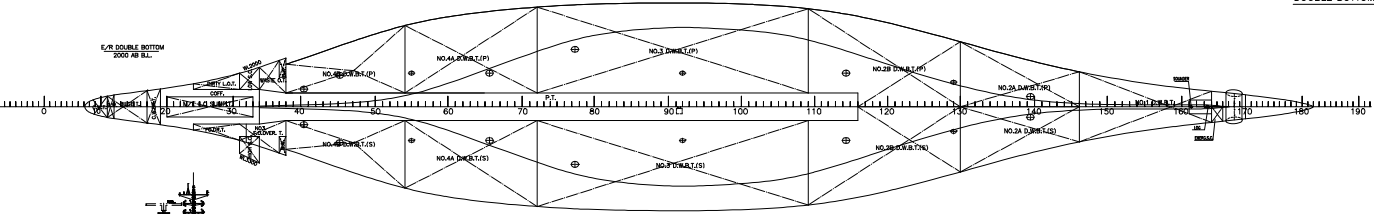
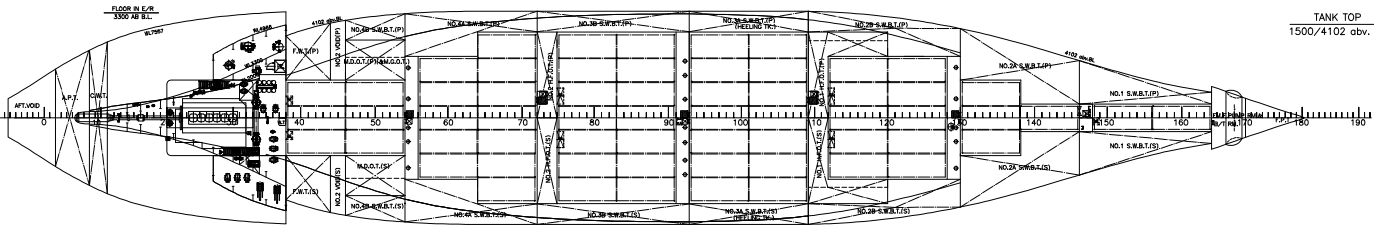
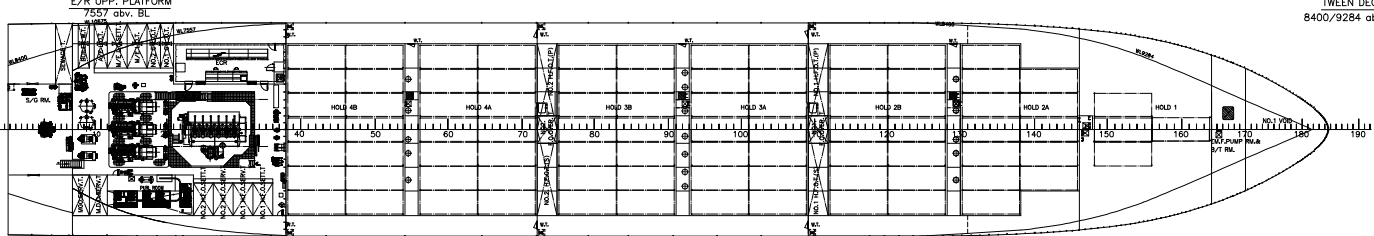
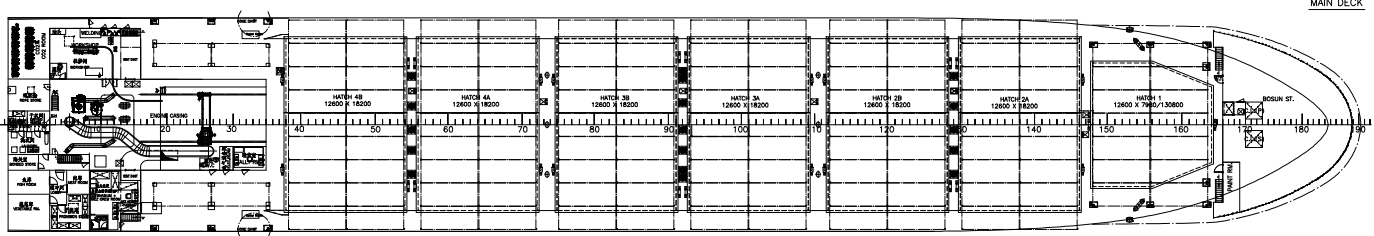
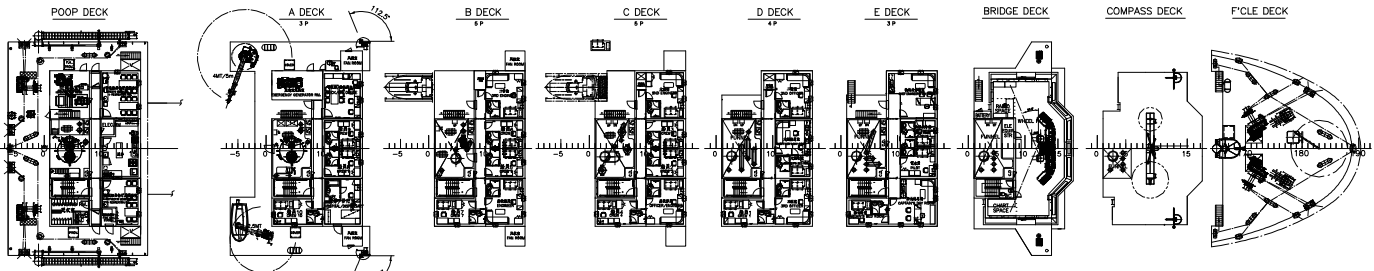
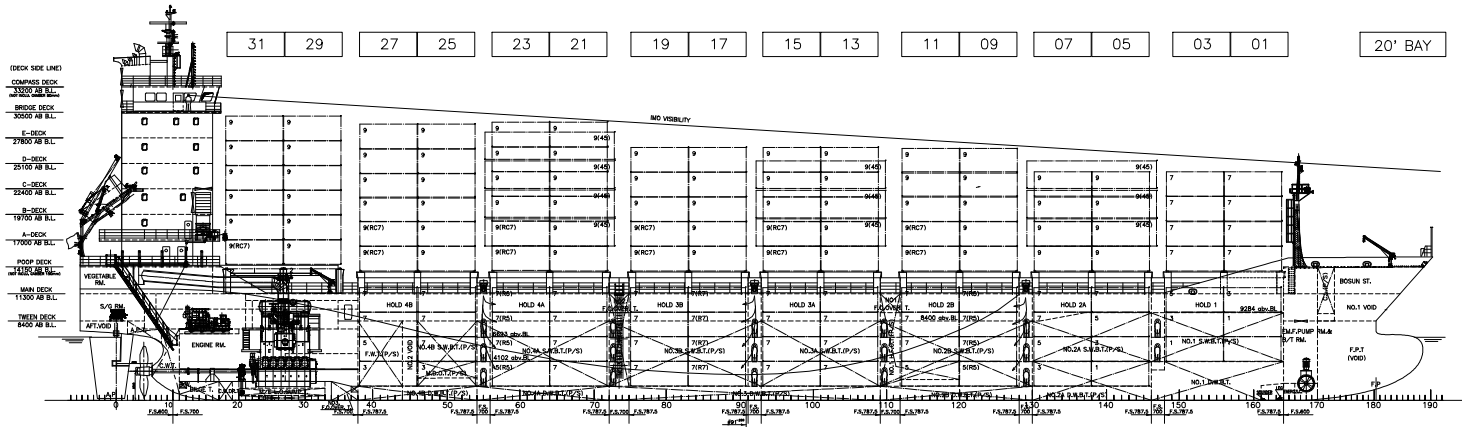


DATE	REV.	DESCRIPTION	DRAWN	CHKD.	REV.	APP.
日期	版本	描述	绘图	校核	审核	签字

31 29 27 25 23 21 19 17 15 13 11 09 07 05 03 01 20' BAY



PRINCIPAL PARTICULARS

LENGTH(O. A)	abt.143.2 m
LENGTH(P)	133.40 m
BREADTH(MLD.)	22.6 m
DEPTH(MLD.)	11.3 m
DRAFT(design/scantling)	6.70/8.30 m
DEAD WEIGHT(D.W./S.L.W.)	abt.7500/11800 mt
CONTAINER CAPACITY (TOTAL)	1042TEU
ON DECK(ISO 20'-8'+8'6")	726TEU
IN HOLD (ISO 20'-8'+8'6")	316TEU
MAIN ENGINE	WartsilaGRT-Flex4BT-D(1761)
M.C.R.	8730 kW x 127 RPM
C.S.R.	7857 kW x 122.8 RPM
SERVICE SPEED(On DESIGN DRAFT)	abt.17.8 kn
(90%MCR with 15% S.M)	abt.17.8 kn
COMPLEMENT	20 P
CLASS: OI +100 AS E CONTAINER SHIP, NAH-QJWJHNDLPE	
*MC E AUT	

电气		11000TEU CONTAINER VESSEL	PRODUCTION DESIGN
船体		15000TEU CONTAINER	船体
船机			TE40601-100-002
船电			1:2000
专业 签字		GENERAL ARRANGEMENT PLAN	1/3
会签			1:2000